

PERIODIC TABLE SOLITAIRE

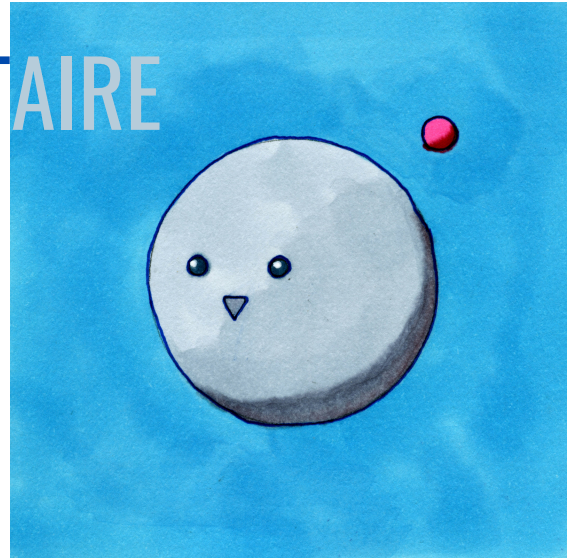
GAME DESIGNER UUS MAAILM

PLAYERS 1

TIME TO PLAY 10 MINUTES

AGES 7 +

OBJECTIVE Try to place the most cards into the periodic table



RULES

1. Shuffle the deck well.
2. Take the top three cards and place them face up in their position of the Periodic Table i.e. Hydrogen at top left Oganesson at bottom right.
3. If any of the cards are in the same group, one can put one of those cards back and flip over another card
4. Flip over the next card- if it is of the same group or numerically adjacent to any of the cards, then it can be placed on the board. If not then it is discarded.
5. Flip through the entire deck and see how many cards can be placed on the board. At the end of the deck count how many cards you have been able to place.